

Botetourt
County

Council
of
Garden
Clubs



Mrs. Simmons To Head Newly Formed Council Of Garden Club

Mrs. W. M. Simmons, delegate from Big Spring Garden Club, Fincastle was elected President of the recently formed Botetourt County Council of Garden Clubs at their second meeting Monday evening. Each of the seven officers is a member of a different garden club in Botetourt. Mrs. W. T. Hunter of the Eagle Rock Garden Club was elected Vice President and Miss Mary Ellen Nabers of the Plant and Hope Garden Club, also of Eagle Rock, will be Secretary of the new organization. The treasurer is Mrs. R. L. Stinnett of the Buchanan Garden Club; Mrs. Winfred Ballard of the Castle Club is Reporter; Mrs. R. E. Garrett, a member of the Orchard View Garden Club will serve as Historian; and Mrs. W. G. Peck of the Fincastle Garden Club will be Custodian. This organization is the second of its kind in Botetourt's history. A former council was disbanded during the second World War and this council would appreciate any information or records concerning the first council. This Council mapped out the year's work at their meeting Monday night. The first general meeting for members of all member clubs will be Friday, March 14 at 7:30 p. m. in the recreation room of the Eagle Rock Methodist Church. Mrs. K. B. Stoner will speak on recent changes in the Flower Show Handbook. This meeting is neces-

sary in preparation for the Council Show to be held on July 26 and 27 in Breckinridge Gym. Mrs. Clemer Camper is Chairman of this show with the following clubs providing committees: Staging, the three clubs in Fincastle; Entries, the two Eagle Rock clubs; Placing, Orchard View; Judges, the Eagle Rock Garden Club; Hospitality Council, Mrs. W. G. Peck; Publicity, the Plant and Hope club;

Awards, Fincastle Garden Club; Special Exhibits, Orchard View Club; and the Clerks will be the one-year delegates to Council. The second general meeting for the year will be Wednesday, November 19 at the H. D. Clubhouse in Daleville at 8:00 p. m. Mrs. Frank Angel, Roanoke, will speak on Christmas decorations. All clubs were well represented at Monday's meeting.

Garden Council Planning Tea

The Rainbow Forest Garden Club hosted the regular Botetourt Council of Garden Clubs meeting in the home of Mrs. Alice Geiger, with all clubs represented.

Plans for the council's participation in the Fincastle Festival were made and scheduled workers to take care of selling items which are donated by the clubs, such as flower pots, containers, dried plant materials and live plants. The sale will be held on the lawn of Mrs. Helen Morris' home.

Mrs. Fern Robertson was named chairman to coordinate a silver anniversary tea from 2-4 p.m. on October 17 at the home of Mrs. Ruby Morgan.

The next council meeting will be hosted by the Fincastle Garden Club. ■

Garden Clubs Council Planning Show

Botetourt County Council of Garden Clubs presents its tenth annual flower show, a salute to "Fincastle, Virginia-Botetourt's County Seat For 200 Years."

The show will be held May 13-14 at Breckenridge School in Fincastle. Lunch will be served

to the judges at noon on May 13 and the show will be judged immediately thereafter. The show will be open to the public from 5 to 9 p.m. on Saturday, May 13 and from 2 to 5 p.m. on Sunday, May 14.

Judges for the show will be Mrs. James R. Alvis, Jr., Mrs. James R. Beavers, Mrs. James L. Sowder, Mrs. R. S. Spencer, Jr., Mrs. H. J. Thorne, Mrs. B. G. Young, Jr., Mrs. W. W. McCathern, (student judge), all of Roanoke, Mrs. H. E. Caldwell, Fincastle, and Mrs. H. T. Grindstaff, Troutville.

Sunday, June 8, 1975

Fincastle Show Uses Flowers For Dedication

FINCASTLE — A flower show celebrating the dedication of the Botetourt County Courthouse, and the bicentennial, will be held June 14-15 at Breckenridge Elementary School.

The show, sponsored by the Botetourt County Council of Garden Clubs, will also feature special exhibits at churches in Fincastle and at the courthouse.

On June 14, the show will follow the dedication of the courthouse by Gov. Mills Godwin at 2 p.m. and continue through 9 p.m.

On June 15, the show will run from 2-5 p.m.

Twenty-one awards to qualifying exhibits will be presented in several categories.

Clubs participating in the flower show are Castle Garden Club, Flowering Hill Garden Club, Eagle Rock Garden Club, Big Spring Garden Club, Rainbow Forest Garden Club, Bonsack Garden Club and Fincastle Garden Club.



WIN AT FLOWER SHOW--Winners in the Botetourt County Council of Garden Clubs' Christmas Flower Show, pictured above left to right, are: seated, Reta

Brumbaugh; standing, Seldia Drewry, Alice Geiger, Ruby Morgan, Sidney Hunter, Gwen Lugar, Hellen Caldwell and Hazel Coggin.

Winners Are Announced In County's Flower Show

The Botetourt County Council of Garden Clubs held a Christmas Flower Show December 8-9 at the Fincastle United Methodist Church.

Top awards went to Hazel Coggin of the Eagle Rock Garden Club, who won the Arboreal Award for the best in horticulture; Hellen Caldwell of Big Spring Garden Club, Creativity Award; Alice Geiger, Rainbow Forest Garden Club, the Bess Stoner Tri-Color Award; and Gwen Lugar, Eagle Rock Garden Club, the Myrtle B. Weeks Award of Merit in horticulture.

Individual awards went to: Hellen Caldwell, the Mary Ruth Eakin Memorial Award, Bank of Fincastle Award, Big Spring Garden Club Award and the Laurel Mountain Farm Award; Reta Brumbaugh won the Bonsack Garden Club Award, and has the second most points in the show; Alice Geiger, the Rainbow Forest Garden Club Award; Seldia Drewry, Castle Garden Club Award; Sidney Hunter, Eagle Rock Garden Club Award, the MacNamara Award, the Thomas E. Haymaker Florist Award for most points in the show, and the First National Bank of Troutville Award; Gwen Lugar, the H. C. Caldwell

Award; Ruby Morgan, the Fincastle Garden Club Award.

Awards won by clubs were: Big Spring Garden Club won the Orchard View Award; Eagle Rock Garden Club won the Fincastle Insurance Agency Award, the Federation Cup and the Ikenberry & Garst Award; and the Rainbow Forest Garden Club won the Bess Stoner Award.



25th Anniversary
1957-1982

Botetourt County
Council
of

Garden Clubs

25th Anniversary
BOTETOURT COUNTY COUNCIL OF
GARDEN CLUBS

October 1957 - October 1982

The Council was organized October 29, 1957 when members of five of the seven clubs met to discuss forming a Botetourt Council of Garden Club.

The seven clubs were: Fincastle Garden Club, Eagle Rock Garden Club, Plant and Hope Garden Club, Buchanan Garden Club, Big Spring Garden Club, Orchard View Garden Club and Castle Garden Club.

The objectives were to have County-Wide flower shows and programs that would help to create more interest toward flowers outside as well as house plants.

Meetings were to be held four times a year, February, May, August and November on the 4th Monday, with meetings from club to club.

Membership being three members from each club or if the delegates could not attend, then an alternate attended. Other members are welcome at any time.

The first president of Council came from Big Spring, Mrs. W. M. Simmons, other officers were elected as follows: Mrs. W. T. Hunter, Eagle Rock, Vice-President,

Miss Mary Ellen Nabors, Plant and Hope, Secretary, Mrs. R. L. Stinnett, Buchanan, Treasurer, Mrs. Richard Hipes, Castle, Reporter, Mrs. R. E. Garrett, Orchard View, Historian and Mrs. W. G. Peck, Fincastle, Custodian. The officers elected represented the seven clubs.

The Council lost no time in setting up the first flower show, which was held July 26 & 27 1958 with Mrs. Clemer Camper as Chairman and a Theme "Salute to Our Schools".

Next in line for a flower show was Castle with a Christmas show.

At this point and time the flower shows would be held every 16 months. Although this was changed to every 18 months.

In 1959 we had the misfortune of losing the Plant and Hope and the Buchanan Garden Clubs.

In 1959 the three clubs in Fincastle sponsored a show to stress the planting and showing Daffodils, you did not have to be a member of garden club to enter. This was to help build the interest for the Big daffodil show held each year.

Down through the years that as soon as one flower show was over another was in the making.

Sometime in 1963 we lost another club, Orchard View, but we also gained two clubs, Bonsack Garden Club and Rainbow Forest Garden Club, then in 1970 we were blessed with another club, The Flowering Hills Garden Club.

In March 1976 the Botetourt County Council were asked to decorate the table for the Bi-Centennial Dance held at Natural Bridge. We met and members of clubs made flowers from paper, these were made into arrangements with fresh greenery with flags.

Over the years we have gained knowledge from the leadership of members from the clubs, being in flower shows or in other activities within council and from the programs we have had. We have had programs and speakers on flower arrangements, workshops, Christmas Decorations, Garden of the Bible, birds, driftwood, different types of flower arrangements and a program of how the Bees enter into the flower world.

Today the council is proud to say that they have six active clubs, Castle, Eagle Rock, Fincastle, Big Spring, Bonsack and Rainbow Forest. If it wasn't for these clubs being active and working together, we would not have flower shows to enjoy the beauty of flowers.

We have averaged a show every 16 to 18 months looking forward to the Spring Show in 1983.

Presidents of Botetourt County
Council for 25 years

ART Simmons 1957-1959	
Mrs. W. T. Hunter	1959-1960
Mrs. J. A. Firebaugh	1960-1961
Mrs. William Smith	1961-1962
Mrs. Stewart Robertson	1962-1964
Mrs. Frances Luger	1964-1965
Mrs. W. W. Luger	1965-1967
Mrs. J. A. Firebaugh	1967-1969
Mrs. Stewart Robertson	1969-1971
Mrs. M. W. Rankin	1971-1973
Mrs. Stewart Robertson	1973-1981
Mrs. John Albert	1981-

CHARTER MEMBERS OF COUNTY COUNCIL

Mrs. A. G. Peters, Eagle Rock
Mrs. E. R. Allen, " "
Mrs. W. T. Hunter, " "
Mrs. E. M. Brooks, Plant & Hope
Mrs. G. John Pauley " "
Miss Mary Ellen Nabors " "
Mr. Thommy Haymaker, Castle
Miss Joyce Henderson " "
Mrs. Richard Hipes, " "
Mrs. H. E. Caldwell, Big Spring
Mrs. H. M. Williamson, Jr. " "
Mrs. W. M. Simmons. " "
Mrs. J. A. Firebaugh, Fincastle
Mrs. W. G. Peck, " "
Mrs. E. N. Camden, III " "
Mrs. W. E. Barton, Orchard View
Mrs. Howard Price, " "
Mrs. R. E. Garrett, " "
Mrs. J. Russell Smith, Buchanan
Mrs. R. L. Stinnett, " "
Mrs. Edith Ripley, " "

GARDEN CLUB COLLECT

Help us, O Lord, to grasp the meaning of
happy growing things, the mystery of
opening buds and fleeting seed, that we
might weave it into the tissue of our fate
in life eternal.

Give us wisdom to cultivate our minds as
diligently as we nurture tender seedlings
and patience to weed out envy and malices
as we uproot troublesome weeds.

Teach us to seek steady root growth, rather
than a fleeting culture, and to cultivate
those traits which brighten under adversity
with perennial loveliness of hardy borders.

Thank God for gardens and their message today
and always.

AMEN

Christmas Party Set By Eagle Rock Club

Nov. 1992

The Eagle Rock Garden Club met recently in the home of Mrs. Nadine Rankin, with Mrs. Lillian Shifflett as co-hostess.

Mrs. Irene Mason, president, welcomed the group. Devotions were by Mrs. Gwen Lugar. The chaplain, Mrs. Maggie Lugar, was absent due to illness. Minutes of the previous meeting were read by Mrs. Shifflett, secretary. Mrs. Lugar gave her treasurer's report.

Committee reports were given by Mrs. Karen Carroll and Mrs. Shifflett. Mrs. Donna Vaughn gave a progress report on the outdoor classroom at Eagle Rock Elementary School.

Mrs. Sidney Hunter reported on the County Council meeting in Fincastle. She said that a county flower show will be held in May, with Mrs. Sylvia Albert as chairman and Mrs. Fern Robertson, co-chairman.

Plans were made for the December meeting, to be held in the home of Mrs. Bessie Stoner, with Mrs. Mary Vaughan as co-hostess. Gifts will be exchanged and packages judged. Baskets for shut-ins will be prepared at 7:30 p.m. December 14.

Slides on flower arrangements in Williamsburg were shown by Mrs. Hunter.

Joe Coggin, supervisor and state biologist, was unable to present the program on feeding birds due to an illness in the family.

Judges for the meeting, Mrs. Lugar and Mrs. Mason, presented the following ribbons: arrangement of the month, "Little Things Mean A Lot," Sidney Hunter, blue; Ouida Persinger, blue; As You Like It, Sidney Hunter, blue; horticulture, Myra Owen, blue.

Also at the meeting, not mentioned previously, was Emily Galumbeck. ■

Garden Clubs Discuss Beauty At Meeting

1983

The Eagle Rock Garden Club was host to the regular meeting of the Botetourt Council of Garden Clubs at the home of Mrs. Sydney Hunter. All clubs were represented.

The main topic for discussion was the planned flower show, "Nature's Beauty On Parade." This was followed by the reading of the schedule, which will be distributed to the club presidents when they meet for lunch at "Country Cookin' "

March 28. The flower show will be held at Troutville Town Hall May 14-15. A new trophy, "For Horticultural Excellency," was brought to the council, given by the Bonsack Garden Club, honoring Mrs. Myrtle Bonsack Stanley, founder of the club. The new trophy is a two-quart pewter pitcher.

The next council meeting will be hosted by Bonsack, the place to be decided later. ■

THE FINCASTLE (VA.) HERALD
NOVEMBER 17, 1983



1983

The Eagle Rock Garden Club met in the home of Mrs. Donna Vaughn, with Mrs. Gwen Lugar as co-hostess. Mrs. Sidney Hunter reported on the upcoming flower show by the County Council May 14-15 at the Chamber of Commerce building in Troutville. Judges for the evening were Mrs. Hunter and Nadine Rankin, who awarded the following ribbons: arrangement of the month, Emily Galumbeck and Bessie Stoner, blue; Irene Mason, red; and Ouida Persinger, yellow; As You Like It, Emily Galumbeck, Irene Mason and Ouida Persinger, red; horticulture, Mary Vaughn, blue; Irene Mason, two blues; and Donna Vaughn, blue. The next meeting will be held in the home of Myra Owen, with Ouida Persinger as co-hostess.

CONSTITUTION AND BY-LAWS

BOTETOURT COUNTY COUNCIL OF GARDEN CLUBS

ARTICLE I - NAME

The name of this council shall be the Botetourt County Council of Garden Clubs, Botetourt County, Virginia.

ARTICLE II - OBJECTIVES

Sec. 1. The Council is to sponsor a flower show every one to two years.

Sec. 2. The Council is to sponsor one program a year.

ARTICLE III - MEMBERSHIP

Sec. 1. Any Botetourt County Garden Club whose application is accepted by the council.

Sec. 2. The club president, two delegates and two alternates to serve two years. Delegates elected alternate years.

ARTICLE IV - OFFICERS AND THEIR ELECTION

Sec. 1. The officers shall be president, vice-president, secretary, treasurer, reporter, and historian.

Council of Garden Clubs Meets Here

The regular meeting of the Botetourt Council of Garden Clubs was held at Fincastle United Methodist Church recently, with all clubs represented. The Big Spring Garden Club was the host club.

Mrs. Sylvia Albert, president, presided. Among the items discussed was the revision of the constitution and by-laws. Mrs. Albert read each item to be revised and the revisions were passed. The new ones will be sent to each club.

The following officers were elected to serve for the next two years: Mrs. Albert, president; Mrs. Fern Robertson, vice-

president; Mrs. Alice Geiger, secretary; Mrs. Pearl Drewry, treasurer; Mrs. Sidney Hunter, historian; and Mrs. Evelyn Murray, publicity.

The next council meeting will be held November 28, with Castle Garden Club the host. ■

Council Of Garden Clubs To Meet

The Botetourt Council of Garden Clubs' regular meeting November 28 will be an open meeting for all members.

It will be at 7:30 p.m. at the Fincastle United Methodist Church, with Mrs. William M. Light as guest speaker. Her topic will be "Symbols of

Christmas," including making ribbon bows. ■

THE FINCASTLE (VA.) HERALD
MARCH 29, 1984

Garden Club Council Meets In Fincastle

The Botetourt County Council of Garden Clubs recently met at the United Methodist Church in Fincastle.

Mrs. Sally Light, a member of the Eagle Rock Garden Club, was in charge of the pro-

gram. She made an arrangement depicting the meaning of Christmas using different symbols and also demonstrated how to make bows.

Refreshments were served. ■

THE FINCASTLE (VA.) HERALD
DECEMBER 8, 1983

Sec. 2. A majority of votes cast shall constitute an election.

ARTICLE V - GOVERNMENT

The business of the council shall be under the direction of the entire membership.

ARTICLE VI - MEETINGS

Unless otherwise provided by the president, the regular meetings of the council shall be held the 4th Monday in February, May, August, and November. February and November meetings will be at 7:30 P.M. and the May and August meeting at 8 P.M.

ARTICLE VII - AMENDMENTS

This constitution may be amended at the annual meeting in August, provided mention was made that the constitution needed to be changed to meet the needs at the May meeting.

- 3 -

BY - LAWS

ARTICLE I - MEMBERSHIP

Sec. 1. Three members from each club shall constitute the membership of council. This should be the president and two delegates, although any member of the clubs may attend. Each club has three votes.

Sec. 2. Each year the club presidents shall submit names of delegates and alternates to the council secretary for the roster.

ARTICLE II - NOMINATIONS

Sec. 1. At the annual meeting in August, officers shall be nominated from the floor from the entire membership of council.

Sec. 2. The elected officers will assume their duties immediately. The term of office shall be two years.

ARTICLE III - DUTIES OF OFFICERS

Sec. 1. The president shall preside at all meetings and shall fulfill all duties pertaining to this office. She shall make arrangements for meeting places and have the secretary notify the club presidents. She shall have signature power if, for any reason, the treasurer cannot perform her duties.

Sec. 2. The vice-president shall perform the duties of the president during her absence and shall serve as chairman of the program committee and also act as the chaplain and present devotions. She shall write "Thank-You" notes to each speaker after he or she has presented a program.

Sec. 3. The secretary shall keep a roster of all members and check their attendance at meetings. She shall keep minutes of each meeting and read them at the next meeting. She shall conduct the correspondence of the council.

Sec. 4. The treasurer shall have custody of all the money belonging to the council collect dues and pay all bills.

Sec. 5. The historian shall keep the Scrapbook and a history of the council.

Sec. 6. The reporter shall have charge of all publicity of council.

ARTICLE IV - RULES THAT GOVERN THE FLOWER SHOWS OF COUNCIL

Sec. 1. No garden club or non-garden club member outside of the Botetourt County Council will be eligible for perpetual awards.

Sec. 2. The president of the council shall appoint the flower show chairman, who shall follow the procedure as prescribed by the National Council of State Garden Clubs, Inc., in their "Handbook for Flower Shows".

Sec. 3. The chairman of the next flower show is automatically the custodian and is responsible for the care of council equipment, such as flower show supplies, records, etc.

Sec. 4. Members may exhibit a maximum of ten horticulture specimens.

ARTICLE V - FLOWER SHOW PERPETUAL AWARDS

1. Federation Cup - Club with the most points.
2. Ikenberry & Garst Award - Club with the most blue ribbons.
3. Bess Stoner Award - Tri-Color Award
4. Laurel Mountain Farm Award - Award of Distinction
5. Mary Ruth Eakin Memorial Award - Creativity Award
6. Myrtle Bonsack Stanley Award - Award of Horticultural Excellence
7. Helen Caldwell Award - The Award of Merit
8. Webster Brick Award - Arboreal Award
9. Orchard View Award - Club with the most blue ribbons in Artistic

- 10. Fincastle Insurance Agency Award - Club with the most blue ribbons in Horticulture
- 11. Lone Star Cement Award - To the person with the most blue ribbons Artistic and Horticulture combined
- 12. MacNamara Award - To the person with the most points Artistic and Horticulture combined
- 13. Bank of Fincastle Award - To the person with the most blue ribbons in Artistic
- 14. First National Bank of Troutville Award - To the person with the most blue ribbons in Horticulture
- 15. Individual clubs may give own awards

ARTICLE VI - DUES

Sec. 1. The annual dues shall be 50¢ per member of participating garden clubs.

Sec. 2. Annual dues shall be paid by June 1st of each year.

ARTICLE VII - QUORUM

Seven members shall constitute a quorum

ARTICLE VIII - AMENDMENTS

The By-Laws may be amended at any regular meeting by a two-thirds vote of the members present.

THE FINCASTLE (VA.) HERALD
MARCH 29, 1984

To Participate In Festival

An invitation to participate in Buchanan's

"Mountain Magic in May" with a flower show was brought to the Botetourt Council of Garden Clubs February meeting and was accepted.

THE FINCASTLE (VA.) HERALD
MARCH 1, 1984

The flower show will be at the Community House on Lowe Street in Buchanan May 5-6.

At a called meeting, the schedules were given to club presidents, to be given out to the individual club members. ■

Council To Hold Flower Show

The Botetourt Council of Garden Clubs will have a flower show during the "Mountain Magic in May" celebration in Buchanan.

The standard flower home show will be held May 6 from 1-5 p.m. in the Community House, Lowe Street, Buchanan.

The next council meeting will be on May 29. ■

The Daily Review, Thursday, May 3, 1984-7

Flower Show

The Community House on Lowe Street will be the setting for the Botetourt County Council of Garden Club Home Flower Show entitled "Mountain Magic in May."

All classes will depict the counties heritage; valleys, James River and Purgatory Mt.

The Show will be opened from 1-5 p.m. on Saturday and Sunday, May 5 and 6.

Flower Show For Mountain Magic

The Botetourt County Council of Garden Clubs will hold a Home Show and Standard Flower Show in conjunction with Mountain Magic in May in Buchanan. The show will be held both Saturday and Sunday, May 5-6, in the Buchanan Community House on Lowe Street.

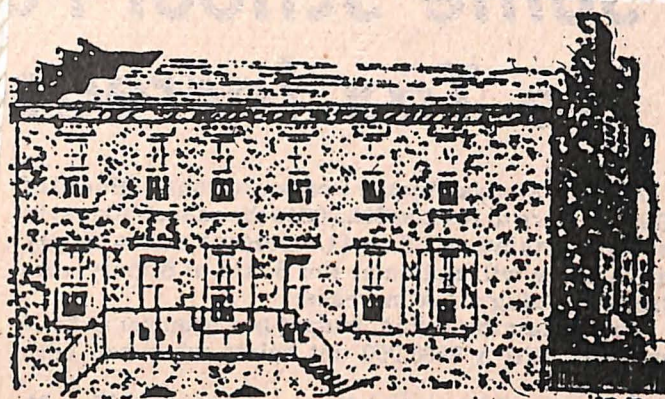
Using the time and location of the show for its central theme, some of the artistic

and creative categories are: "Springtime in the Mountains," "How Green is My Valley," "Travel on the James River," "Bear Tolley's Purgatory," and "May Time Magic." There also will be a number of awards in horticulture competition.

No one is admitted to the show during the judging, which begins at 10:30 a.m. Saturday. The show will be open then to the public for the remainder of the festival.

The show is dedicated to the memory of the late Mrs. Maggie Lugar of Eagle Rock. ■

THE FINCASTLE (VA.) HERALD
APRIL 19, 1984



SITE OF SHOW--The Buchanan Community House on Lowe Street will be the setting for the Botetourt County Council of Garden Clubs' Home Flower Show entitled "Mountain Magic in May" this Saturday and Sunday. There will be three classes in each division: artistic, creativity and one invitational class in which four Buchanan residences will compete. The Virginia Game Commission will provide an exhibit on birds for the educational division. All classes will depict the region's heritage: valleys, James River and Purgatory Mountain. Horticulture also will be judged. The show will be open from 1-5 p.m. both days. ■

Council Of Garden Clubs To Hold Flower Show

The Botetourt County Council of Garden Club's scheduled meeting for February 27, at the home of Alice Geiger, hosted by Rainbow Forest Club, was cancelled because of an ice storm.

The main purpose of this meeting was to complete final plans for the flower show to be held May 5-6, at the historic Wilson's Warehouse, now known as Community House in Buchanan. This flower show will be held in conjunction with Buchanan's spring festival, "Mountain Magic in May."

The theme of the show

will be "Mountain Magic in May," it will be a home show--a standard flower show.

The flower show committee members are: Mrs. John E. Albert, Jr., general chairman; Mrs. Joe L. Coggin, vice-chairman; Mrs. John E. Albert, Jr. and Mrs. Joe L. Coggin, advance entries; Rainbow Forest Garden Club, awards; Mrs. John E. Albert, Jr., Mrs. Stewart Robertson, tabulations; Bonsack Garden Club, classification, entries and placement--artistic and horticulture; Members from all clubs, hospitality; Fincastle Garden

Club, judges, judges hospitality and clerks; Castle Garden Club, publicity; Eagle Rock Garden Club, schedule; Big Spring Garden Club, staging and properties; All members, dismantl-

ing.

Council President Sylvia G. Albert will call a luncheon meeting sometime in March. Schedules will be given out to all clubs, along with final instructions. ■

Winners Announced In Buchanan's Home Flower Show



(Photo by Rick Knobloch)

*Shown is one of the winning exhibits...
...in flower show held last weekend.*

The Botetourt County Council of Garden Clubs has announced the winners in the home flower show held May 5-6 as part of the Mountain Magic in May festival in Buchanan.

The class, theme, winner, award, and name of club are listed below:

- Artistic, tri-color, Class 1, "Springtime in the Mountains"--Evelyn Murray, blue, Rainbow Forest Garden Club; Sylvia Albert, red, Big Spring Garden Club; Sally Light, yellow, Eagle Rock Garden Club; and Irene Mason, honorable mention, Eagle Rock Garden Club.

- Class 2, "Our Country's Heritage"--Sally Light, blue, Eagle Rock club; Sidney Hunter, red, Eagle Rock club; Iris Hedrick, yellow, Castle Garden Club; and Bess Stoner, honorable mention, Eagle Rock club.

- Class 3, "How Green is My Valley"--Sylvia Albert, blue, Big Spring; Geneva Hipes, red, Castle; Doris Hall, yellow, Bonsack Garden Club.

- Section B, Creativity Award, Class 4, "Little Things Mean A Lot"--Ouida Persinger, blue, Eagle Rock; Reda Brumbaugh, yellow, Bonsack.

- Class 5, "Travel on the James River"--Hazel Coggin, blue, Eagle Rock; Sidney Hunter, red, Eagle Rock; Reda Brumbaugh, yellow, Bonsack; Pat Simmons, honorable mention, Big Spring.

- Class 6, "Bear Tolley's Purgatory"--Hazel Coggin, blue, Eagle Rock; Kathryn Buhrman, red, Eagle Rock; Pat Simmons, yellow, Big Spring; and Beverly Stafford, honorable mention, Big Spring.

- Section C, Invitational Class, Class 7, "May Time Magic"--Mrs. J. R. Smith, blue; Mrs. J. C. Lawrence, red; Mrs. Les Dye, yellow; and Mrs. Carroll B. Manley, honorable mention, all of Buchanan.

National Council award winners were: Division I, Artistic, tri-color, Sylvia Albert, Big Spring; creativity award, Hazel Coggin, Eagle Rock; invitational class, Mrs. J. R. Smith, J. C. Lawrence, Mrs. Les Dye and Carroll B. Manley all received ribbons.

Horticulture II Education, Awards of Appreciation went to: Arboreal Award, flowering shrubs and trees, Reda Brumbaugh, Bonsack; Award of Merit, perennials and biennials, Sylvia Albert, Big Spring; Award of Merit, houseplants, Rosalia Dodd, Fincastle. The award for horticulture excellence went to Sylvia Albert for the finest entry

THE FINCASTLE (VA.) HERALD
MAY 10, 1984

In Community House

in the Horticulture Division.

Other awards made by the council were:

- Federation Cup--Club with most points, Eagle Rock Garden Club;

- Fincastle Insurance Agency Award--Club with most blue ribbons in horticulture, Eagle Rock Garden Club;

- Orchard View Award--Club with most blue ribbons in artistic, Eagle Rock Garden Club;

- Ikenberry and Garst Award--Club with most blue ribbons in artistic and horticulture combined, Eagle Rock Garden Club;

- Individual Club Award--Person with the most points: Sylvia Albert, Big Spring; Reda Brumbaugh, Bonsack; Geneva Hipes, artistic, Fern Robertson, horticulture and most points, Castle; Hazel Coggin, Eagle Rock; Rosalia Dodd, Fincastle; and Evelyn Murray, Rainbow Forest.

The educational exhibit by Mrs. Joe L. Coggin, the Virginia Game Commission Bird Study, received an Award of Appreciation.

Judges were Mrs. T. Coleman Musgrove of Bedford; Mrs. Harry M. Henderlite, Dublin; Mrs. James R. Beaver, Dublin; Mrs. Arlie Arritt, Covington; Mrs. Chester Kruszyna, Covington; and Mrs. James R. Light, Covington. ■



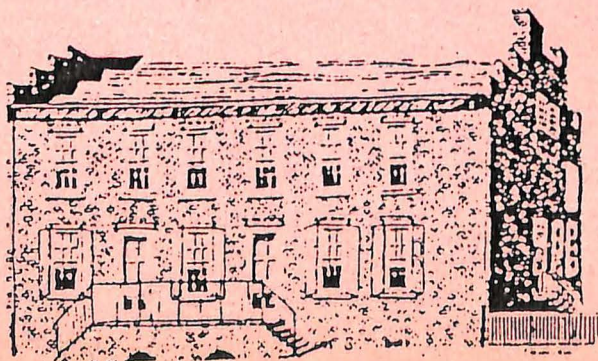
Mountain Magic In May



Botetourt County Council
of
Garden Clubs
Home Show
Standard Flower Show
"Mountain Magic in May"

Community House
Lowe Street
Buchanan, Virginia

May 5 & 6, 1984 - 1-5PM



K. Lee

BUCHANAN VIRGINIA

This Flower Show is dedicated
to the memory of our dear
member of Botetourt Council
and Eagle Rock Garden Club,
Mrs. W. W. Lugar, Sr., Maggie,
to whom we all give credit
for much of our Council's
success.

FLOWER SHOW COMMITTEE

General Chairman....Mrs. John E. Albert, Jr.
Vice Chairman.....Mrs. Joe L. Coggin
Advance Entries.....Mrs. John E. Albert
 992-3344
 Mrs. Joe L. Coggin
 884-2983
Awards.....Rainbo Forest Garden Club
Tabulations.....Mrs. John E. Albert, Jr.
 Mrs. Stewart Robertson
Classification,.....Bonsack Garden Club
Entries & Placement -
Artistic & Horticulture
Hospitality.....Members from all Clubs
Judges, Judges.....Fincastle Garden Club
Hospitality &
Clerks
Publicity.....Castle Garden Club
Schedule.....Eagle Rock Garden Club
Staging and.....Big Spring Garden Club
Properties
Dismantling.....All Members

GENERAL RULES

1. Only members of the Botetourt County Council of Garden Clubs are eligible to exhibit in this show, except Artistic Class 7 and Division II - Educational.
2. Advance registration of both Artistic & Horticulture entries must be made by Tuesday, May 1, & each individual is responsible for seeing that all Artistic reservations made by her are filled.
3. Each exhibitor must hand into Entries Committee a list of both Artistic and Horticulture entries at time of entry.
4. Entries will be received from 8 AM to 9:30 AM Saturday, May 5th, and may not be removed before 5 PM Sunday, May 6th, but must be removed by 6 PM.
5. An exhibitor may enter only one exhibit in a class or sub-class.
6. Rules of the State Conservation List must be observed and plant material may be used if grown by exhibitor. A card must state "Grown by Exhibitor".
7. The show committee will exercise all care possible but will not assume responsibility for damage or loss of exhibitors' property. The exhibitors name should be on all property.
8. This show will comply with the Standards of National Council of State Garden Clubs, Inc.
9. Judging will begin at 10:30 AM, Saturday, May 5th, and the decision of the Judges will be final.
10. Only authorized personnel may remain on floor during judging.

ARTISTIC RULES

1. Artistic classes limited to four exhibits each.
2. Entries must be completed before arriving on the show floor except for minor adjustments at time of placement.
3. Exhibitor must list on a 3" x 5" card the plant material used & place with exhibit.
4. Accessories may be used in all design classes.
5. Panel backgrounds, appropriate size, must be used in Class 4.

HORTICULTURE RULES

1. Exhibitor allowed no more than 10 entries, according to Council's By-Law - Article IV, Sec. 4.
2. All exhibits must have been grown by exhibitor and must have been in exhibitors possession at least three month.
3. Exhibits should be named if possible, preference will be given to named exhibits.
4. Classification Committee may add classes or sub-classes as necessary, also sub-divide.
5. All Horticulture must be displayed in Amber (brownish) glass bottles of appropriate size furnished by exhibitor. Must also furnish support or wedge for specimen.
6. Each entry must be pre-labelled with class number and variety name.

AWARDS

DIVISION I - Artistic

Tri-Color Award - Classes 1 through 3
eligible

Creativity Award - Classes 4 through 6
eligible

Invitation Class - The Standard System of
Awarding by National Council

DIVISION II - Educational - Award of
Appreciation

DIVISION III - Horticulture

Arboreal Award - Section E, Classes 1 through
9 eligible

Award of Merit - Section F, Classes 10 through
13 eligible

Award of Merit - Section G, Classes 14 through
25 eligible

Award of Merit - Section H, Classes 26 through
28 eligible

The Award of Horticultural Excellence - Will
be awarded to the exhibit judged as finest in
the entire Horticultural Division

DIVISION I - Artistic

Section A - Tri-Color - Front Parlor

All fresh plant material, one or more
accessories permitted.

Class 1 - Spring Time in the Mountains

Free Standing Design for Dining Room
tables - 41" long, 36" wide, 29" high

Class 2 - Our Countries Heritage

Design for table against wall, 41"
long, 22" wide, 29" high

Class 3 - How Green is my Valley

One for Mantel - 76" long, 8" deep,
41" high; one in front of Looking
Glass - 51" high x 45" wide; one on
Baby Grand Piano; one on Table
against wall - 41" long, 22" wide,
29" high

Section B - Creativity Award

Designer's choice of fresh and/or dried plant
material, with emphasis on fresh plant material,
one or more accessories permitted.

Class 4 Little Things Mean a Lot - Sm. Parlor

Small Arrangement - Not to exceed 8"
in all dimensions. Panel backgrounds
appropriate size for designs. Top of a
Bookcase - 86" long, 9" deep, 41" high,
10-3/4" x 9" for each design

Class 5 - Travel on the James River - Sm. Parlor

One for Mantel - 86" long, 60 1/2" high,
11 1/2" deep; one Upright Piano - 51"
long, 56" high, 15" deep; one table -
top 19" x 20 1/2", 31" high; one round
top Candle Table - 16" diameter, 29"
high

Class 6 - Bear Tolley's Purgatory - Dining Room

One for Mantel - 60½" high, 86" long, 11½" deep, one for Dropleaf Table against wall - 48" long, 19" wide, 30" high, two for Pedestals - 40" high, top surface 24" x 20"

Section C - Invitational Class - Hall

Class 7 - May Time Magic

All fresh plant material, one or more accessories permitted.

Two on Pedestals - 40" high, top surface 12" x 12", one on Hat Rack Stand - 14" long, 8" wide, 35" high, one on Petticoat table - 41" long, 18" deep, 36" high

DIVISION II - Educational - Front Parlor

Section D - Virginia Game Commission
Exhibit - Bird Study Kit
Mrs. Joe L. Coggin

DIVISION III - Horticulture

Section E - Flowering Shrubs and Trees
Specimen branch must be 10" and not exceed 21" in length

- Class 1 - Azalea
 - a. single
 - b. double
- Class 2 - Spirea Prunifolia (Bridal Wreath)
- Class 3 - Chaenomeles Lagnaria (Japanese Quince)
- Class 4 - Pieris Japonica (Andromeda)
- Class 5 - Prunus (Cherry)
- Class 6 - Malus (Crabapple)
- Class 7 - Cornus (Dogwood)
 - a. white, b. pink, c. red
- Class 8 - Camellia
- Class 9 - Any Other flowering shrub or tree not listed

Section F - Bulbs, Corms, Rhizomes & Tubers

- Class 10 - Tulipa - Tulips
 - a. single, b. double, c. parrot, d. multiflowered, e. any other
- Class 11 - Narcissi - Daffodils
 - a. trumpet daffodil, b. large-cupped daffodil, c. small-cupped daffodil, d. double daffodil, e. any other
- Class 12 - Iris
 - a. Miniature Dwarf Bearded, 2" to 8"
 - b. Standard Dwarf Bearded, 8" to 15"
 - c. Intermediate Bearded, 16" to 28"
 - d. any other
- Class 13 - Any Other Bulb, Corm, Rhizome or Tuber not listed

Section G - Perennials and Biennials

Class 14 - Bleeding Heart (Dicentra)

Class 15 - Columbine (Aquilegia)

Class 16 - Pinks (Dianthus)

Class 17 - Foxglove (Digitalis)

Class 18 - Sweet Williams (Dianthus)

Class 19 - Candy Tuft (Iberis)

Class 20 - Coral Bells (Heuchera)

Class 21 - False Indigo (Baptisia)

Class 22 - Oriental Poppy (Papaver)

Class 23 - Lupine (Lupinus)

Class 24 - Primrose (Primula)

Class 25 - Any Other

Section H - House Plants

Class 26 - African Violets - Saintpaula
a. single flowered, b. double flowered,
c. miniatures, d. variegated foliage

Class 27 - Ferns
a. birds-nest, b. boston, c. maiden-
hair, d. any other

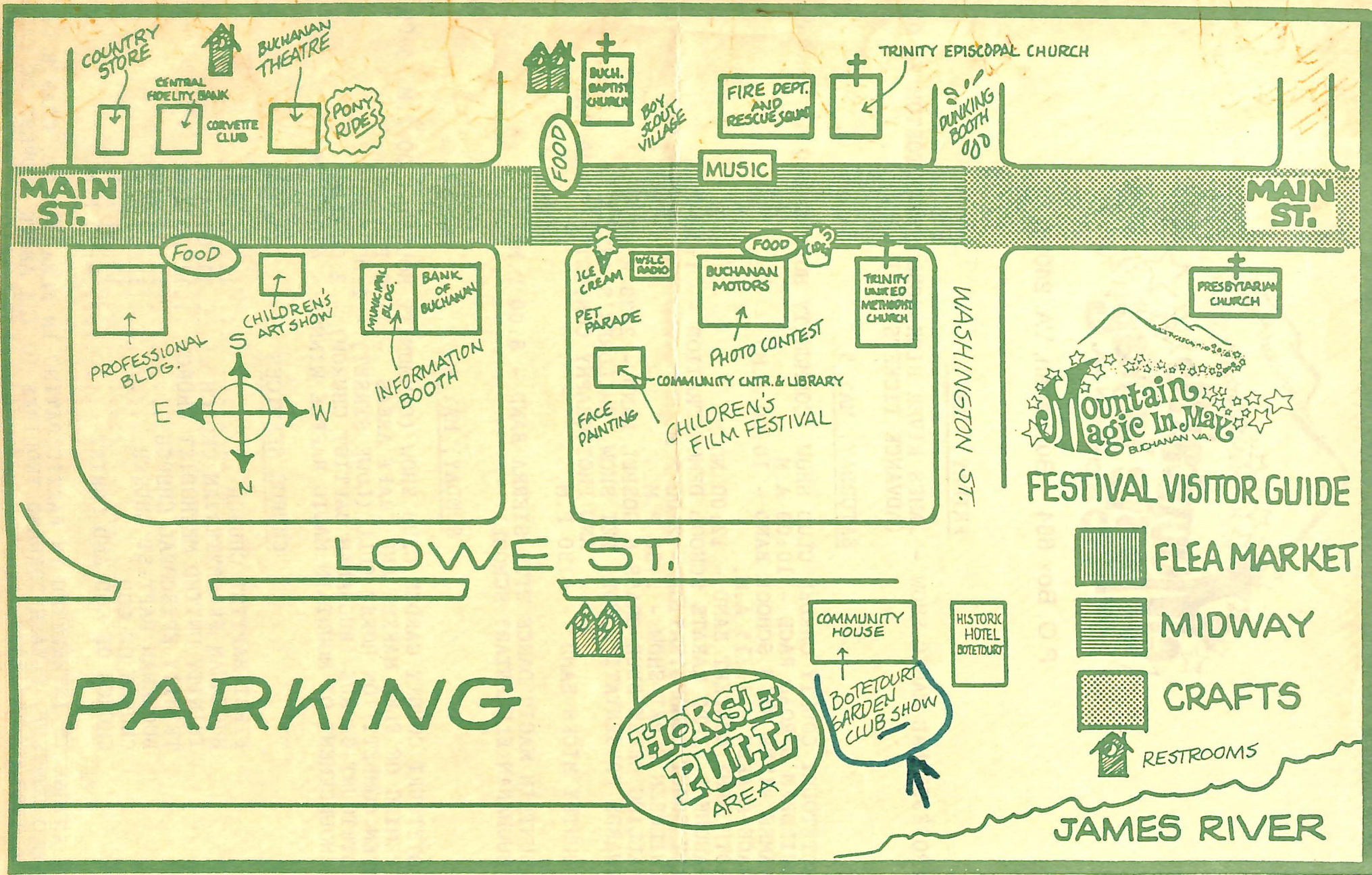
Class 28 - Miscellaneous
a. Jade - Crassulaceae
b. Peperomia
c. Begonia
d. Croton - Codiaeum
e. Geranium - Pelargonium
f. Shrimp Plant - Pelargonium
g. Ivy - Hedera Helix
h. Prayer Plant - Maranta
i. Any Other

PERPETUAL AWARDS

1. Bess Stoner Award - Tri-Color Award
2. Mary Ruth Eakin Memorial Award - Creativity Award
3. Webster Brick Award - Arboreal Award
4. Sylvia G. Albert Award - Award of Merit
5. Hellen Caldwell Award - Award of Merit
6. Maggie Lugar Award - Award of Merit
7. Myrtle Bonsack Stanley Award - The Award of Horticultural Excellence
8. Federation Cup - Club with the most points
9. Fincastle Insurance Agency Award - Club with the most blue ribbons in Horticulture
10. Orchard View Award - Club with the most blue ribbons in Artistic
11. Ikenberry and Garst Award - Club with the most blue ribbons Artistic and Horticulture combined
12. Individual Clubs may give own awards

Schedule Approved
by
The Virginia Federation
of
Garden Clubs, Inc.

Shenandoah District
Flower Show Chairman
Mrs. W. F. Austin



FESTIVAL VISITOR GUIDE

-  FLEA MARKET
-  MIDWAY
-  CRAFTS
-  RESTROOMS

JAMES RIVER



P.O. Box 684 Buchanan, VA. 24066

FRIDAY, MAY 4

PROFESSIONAL MAGIC SHOW - JAMES RIVER HIGH SCHOOL AUDITORIUM - 6:00 P.M.
(ADVANCE TICKETS AVAILABLE)

SATURDAY, MAY 5

BOTETOURT COUNTY GARDEN CLUB SHOW (COMMUNITY HOUSE) - 1:00 P.M. - 5:00 P.M.
CHILDREN'S ROAD RACE - 10:00 A.M.
JAMES RIVER HIGH SCHOOL BAND - 10:00 A.M.
RACE AWARDS - 11:15 A.M.
90TH ARMY CONCERT BAND - 12:00 NOON
RAGONE'S KEMPO KARATE SCHOOL DEMONSTRATION - 1:30 P.M.
BOY SCOUT DEMONSTRATION - 2:00 P.M.
CHILDREN'S PET SHOW - 2:30 P.M.
FALLING CREEK BLUE GRASS & GOSPEL BAND - 2:30 P.M.
AWARDS PRESENTATION FOR: PET SHOW, CHILDREN'S ART,
AND PHOTOGRAPHY CONTESTS - 4:00 P.M.
COUNTRY HICKS BAND - 4:30 P.M.
MOUNTAIN MAGIC DANCE WITH SIERRA BAND - 8:00 P.M.
(BUCHANAN ELEMENTARY SCHOOL)

SUNDAY, MAY 6

BOTETOURT COUNTY GARDEN CLUB SHOW (COMMUNITY HOUSE) - 1:00 P.M. - 5:00 P.M.
OPENING OF FLEA MARKET AND CRAFT AREAS - 1:00 P.M.
OPEN COMPETITION HORSE PULL (LOWE STREET) - 2:00 P.M.
BOTETOURT CHORUS (BUCHANAN BAPTIST CHURCH) - 3:00 P.M.
ANNOUNCEMENT OF MOUNTAIN MAGIC RAFFLE WINNER - 4:00 P.M.

CHURCH SERVICES

FIRST BAPTIST CHURCH 11:00 A.M.
BUCHANAN PRESBYTERIAN CHURCH 11:00 A.M.
TRINITY UNITED METHODIST CHURCH ... 11:00 A.M.
TRINITY EPISCOPAL CHURCH 11:00 A.M.
BUCHANAN BAPTIST CHURCH 11:00 A.M.
CHURCH OF GOD 11:00 A.M.
CHURCH OF GOD AND CHRIST 4:00 P.M.

IF ANYONE IS INTERESTED IN PARTICIPATING IN FLEA MARKET, CRAFTS OR PHOTO CONTEST, PLEASE FORWARD INQUIRES TO THE ABOVE ADDRESS OR CALL 254-1783 OR 254-2377.

Mountain Magic In May PROGRAM

FRIDAY, MAY 4

PROFESSIONAL MAGIC SHOW-JAMES RIVER HIGH SCHOOL AUDITORIUM-8:00 P.M.
(Advance Tickets Available)

SATURDAY, MAY 5

BOTETOURT COUNTY GARDEN CLUB SHOW (COMMUNITY HOUSE)-1:00 P.M.-5:00 P.M.
 CHILDREN'S ROAD RACE-10:00 A.M.
 JAMES RIVER HIGH SCHOOL BAND-10:00 A.M.
 RACE AWARDS-11:15 A.M.
 90th ARMY CONCERT BAND-12:00 NOON
 RAGONE'S KEMPO KARATE SCHOOL DEMONSTRATION-1:30 P.M.
 BOY SCOUT DEMONSTRATION-2:00 P.M.
 CHILDREN'S PET SHOW-2:30 P.M.
 FALLING CREEK BLUE GRASS & GOSPEL BAND-2:30 P.M.
 AWARDS PRESENTATION FOR: PET SHOW, CHILDREN'S ART, AND PHOTOGRAPHY CONTEST-
 4:00 P.M.
 COUNTRY HICKS BAND-4:30 P.M.
 MOUNTAIN MAGIC DANCE WITH SIERRA BAND-8:00 P.M. (Buchanan Elementary School)

SUNDAY, MAY 6

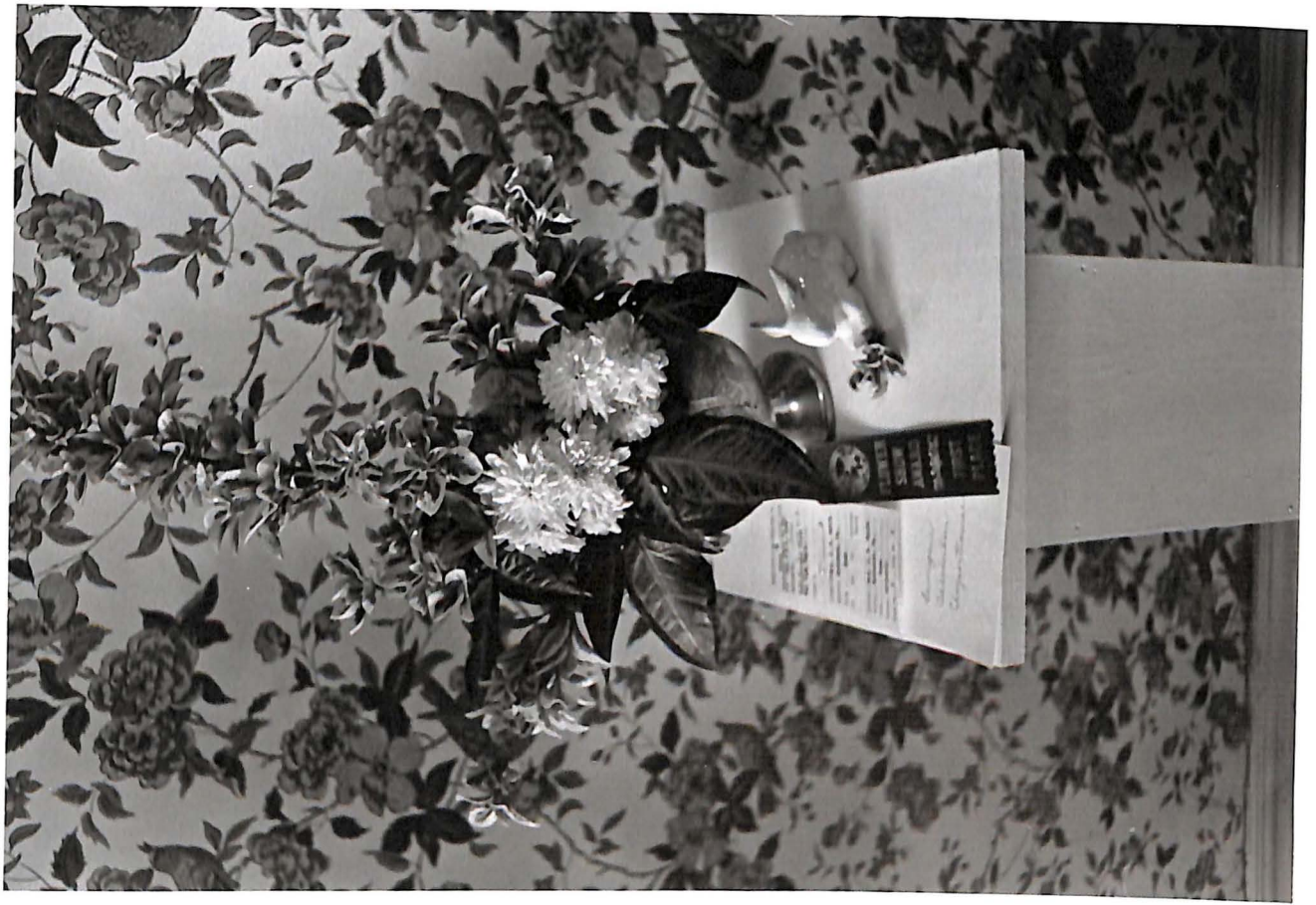
BOTETOURT COUNTY GARDEN CLUB SHOW (COMMUNITY HOUSE)-1:00 P.M.-5:00 P.M.
 OPENING OF FLEA MARKET AND CRAFT AREAS-1:00 P.M.
 OPEN COMPETITION HORSE PULL (LOWE STREET)-2:00 P.M.
 BOTETOURT CHORUS (BUCHANAN BAPTIST CHURCH)-3:00 P.M.
 ANNOUNCEMENT OF MOUNTAIN MAGIC RAFFLE WINNER-4:00 P.M.

— CHURCH SERVICES —

FIRST BAPTIST CHURCH	11:00 A.M.
BUCHANAN PRESBYTERIAN CHURCH	11:00 A.M.
TRINITY UNITED METHODIST CHURCH	11:00 A.M.
TRINITY EPISCOPAL CHURCH	11:00 A.M.
BUCHANAN BAPTIST CHURCH	11:00 A.M.
CHURCH OF GOD	11:00 A.M.
CHURCH OF GOD AND CHRIST	4:00 P.M.

For More Information Call 254-1783 or 254-2377









THE FINCASTLE (VA.) HERALD
JUNE 7, 1984

Botetourt Council Of Garden Clubs Meets

The Botetourt Council of Garden Clubs met at the Country Cookin' Restuarant on May 28 for lunch.

All clubs were represented, with Big Spring Garden Club as hostess.

Everyong expressed satisfaction and pleasure

in the recent flower show, "Mountain Magic in May," held in the Community House in Buchanan May 5.

The next meeting will be on August 27 at 8 p.m. in the home of Mrs. Gwen Lugar, with the Eagle Rock Garden Club. ■

Garden show

(Continued from Page 1-A)

SEPT. 24, 1986

Workshop preceding Botetourt flower show

By Marjorie Roberts

Special Writer

To celebrate the beauty of autumn, the Fincastle Garden Club will present a standard flower show with the theme "October Opulence." The show, free to the public, will be open each afternoon of October 11 and 12 at the For Arts Sake Gallery on the corner of US 220 and Rt. 630 in Fincastle.

Artistic floral arrangements and horticultural displays will be the features of the show, as well as several educational displays. Participants in the show will be from the Botetourt County Council of Garden Clubs.

"The idea for this show came from Ouida Persinger. She said when she saw the gallery, 'My, what a lovely place for a flower show!' So we decided to go for it."

Camp near Buena Vista. It is sometimes used by club members for field trips but the camp is primarily for children who may attend for several week sessions in the summer. The children have studies in conservation, plant identification and biology as part of the camp activities. Some garden

clubs sponsor a child to go to the Nature Camp.

Another activity on the state level is accreditation of judges. There is rigorous training for a garden club member who wishes to become a judge. She must be successful in shows and then take many courses, which are

Rita Kapron, chairman of the show said. "In preparing for the show, I find again that our club members are such vast sources of knowledge. I've learned so much from them and I'm still asking questions, questions, questions."

To prepare for the show, local club members will be able to participate in a one-day workshop on floral arrangement Saturday, Oct. 4, led by Betty Sowder of Roanoke. Floral arrangements for show follow specific artistic principles in their use of line, mass, form, proportion, texture and color intensity. Members have learned some of the "how to" in these areas of art at recent meetings.

Fincastle Garden Club, the area's oldest, was established 57

(Continued on Page 2-A)

everywhere to plant sunflowers.

Interests of individual members are quite varied. Flower arrangement, landscaping, ecology, flower and vegetable culture are all covered in the meetings. The specialty of growing fine roses is the hobby for some members. Herbs appeal to others. "Conservation is my main interest," said Mrs. Hanes. "I love wild flowers, birds, butterflies and a natural environment. I hate to see litter and other disturbances by mankind. I'm a pro-park person, and for beautification of the land."

"I like to learn better ways to garden," says Mrs. Drewry. "My family has always had a vegetable garden and some flowers. I like the social aspect of

the club, too. Flowers? They're all beautiful to me."

After over half a century, membership in an organization changes, and emphasis does, too. Still, there's a constant in the old club that will never be really out-of-date. It is reflected in the Fincastle Garden Club's motto: "Nature never did betray the heart that loved her."

are to
ge,
ow
lge

six
zel
of
of
in
rs.
the
ese
out
in

the
ork
. In
one
the
the
so,
ast
red
dge
of
the
ers
are.
to
the
ers

First Mountain Magic Festival



(Photo by Rick Knobloch)

Crowds lined Buchanan's Main Street during first annual...

...Mountain Magic in May festival last weekend.

THURSDAY, MAY 10, 1984

Is Great Success

Enthusiastic supporters and organizers of the Mountain Magic in May festival held this past weekend in Buchanan declared it a significant success and are discussing plans for next year.

Attendance estimates ranged from a conservative 6,500 persons to an estimated 9,500 for the entire weekend.

Good weather favored the event, but more than 1,500 people came out Sunday afternoon, following a morning downpour, to stand in three inches of mud to watch horse-pull teams struggling in the same mire.

The weekend's events included a sellout magic show on Friday night at James River High School, a Botetourt County Garden Club Show at the Community House on Saturday (see separate story) a children's road race (see separate story), concerts by the James River High School Band and the 90th Army Concert Band, a karate demonstration, a Boy Scout demonstration, a children's pet show, a photography contest, music by bluegrass and gospel groups, and a sell-out dance on Saturday night at the Buchanan Elementary School.

There was a flea market and craft area, and the Botetourt County Chorus performed on Sunday at 3 p.m.

Over 520 people attend the "standing room only" magic show on Friday night at James River High School.

The offering of helicopter rides attracted a total of 132 passengers, at \$10 each or more, depending on the length of the ride, with ten percent of the proceeds going to the festival fund.

Buchanan's Main Street was closed from 6 a.m. on Saturday morning until 6 p.m. Saturday night.

Most of the merchants in Buchanan described the event as a "huge success."



Mountain
Magic In May
BUCHANAN VA.





**Mountain
Magic In May**
BUCHANAN VA.

May 14, 1984

Dear Mrs. Albert,

The Mountain Magic in May
Committee would like to thank
Botetourt County Garden Clubs, for
adding so much talent and beauty
to our festival.

It would be a pleasure to
see you again next year.

Again many, many thanks.

Norma Jean Willis



felt when you were over. You
fortunate to have such a great place
like that to have a show. I'm sure
you had a large crowd to see all
of these beautiful flowers - your hard
work paid off! Many thanks again.

Sincerely,

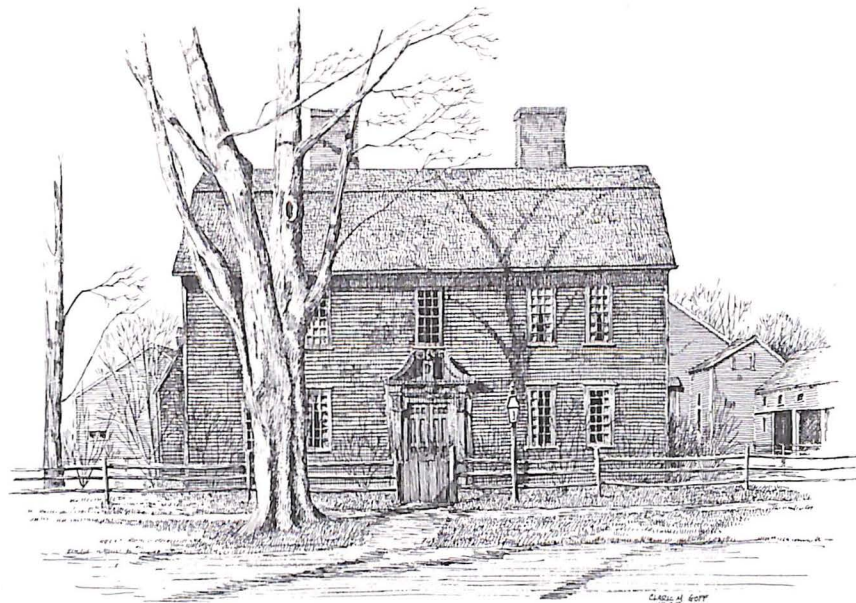
Hazel Mungrove

May 17, 1954

Dear Mrs. Brewery,

Thank you for giving me the
privilege of judging in your beautiful
Council Flower Show. It was a lovely
show and I appreciate all the hospitality
extended me. Also, am enjoying the
lovely note paper -

We just got our show over on
the 11th - so I know how you



ASHLEY HOUSE DEERFIELD, MASSACHUSETTS

Botetourt Council Of Garden Clubs Meets

The Botetourt Council of Garden Clubs met at the Country Cookin' Restuarant on May 28 for lunch.

All clubs were represented, with Big Spring Garden Club as hostess.

Everyong expressed satisfaction and pleasure

in the recent flower show, "Mountain Magic in May," held in the Community House in Buchanan May 5.

The next meeting will be on August 27 at 8 p.m. in the home of Mrs. Gwen Lugar, with the Eagle Rock Garden Club. ■

The luncheon was delicious, as it was beautiful with the table decorations -

Everything was so lovely and nice

Thanks for the invitation.

Fondly

Nannie, (Mrs H. Henderson)



ASHLEY HOUSE DEERFIELD, MASSACHUSETTS

CLAUDE M. BENT
1924

Dear Mrs. Drewery,

It was a pleasure being in Buchanan Saturday. The Show was beautiful and the arrangements were outstanding.

The luncheon was delicious and well planned. Many thanks for the Stationery and for having me.

Sincerely,
Nancy Kruszynka

May 10, 1984

Thank You

Dublin Va,
5/12/84

Mrs Pearl Drewery:
Fincastle Va,

Dear Mrs Drewery:

I want to express my appreciation
to you for inviting me to help judge your
beautiful flower show.

You had a lovely show and I enjoy
working with the ladies in the other
districts -

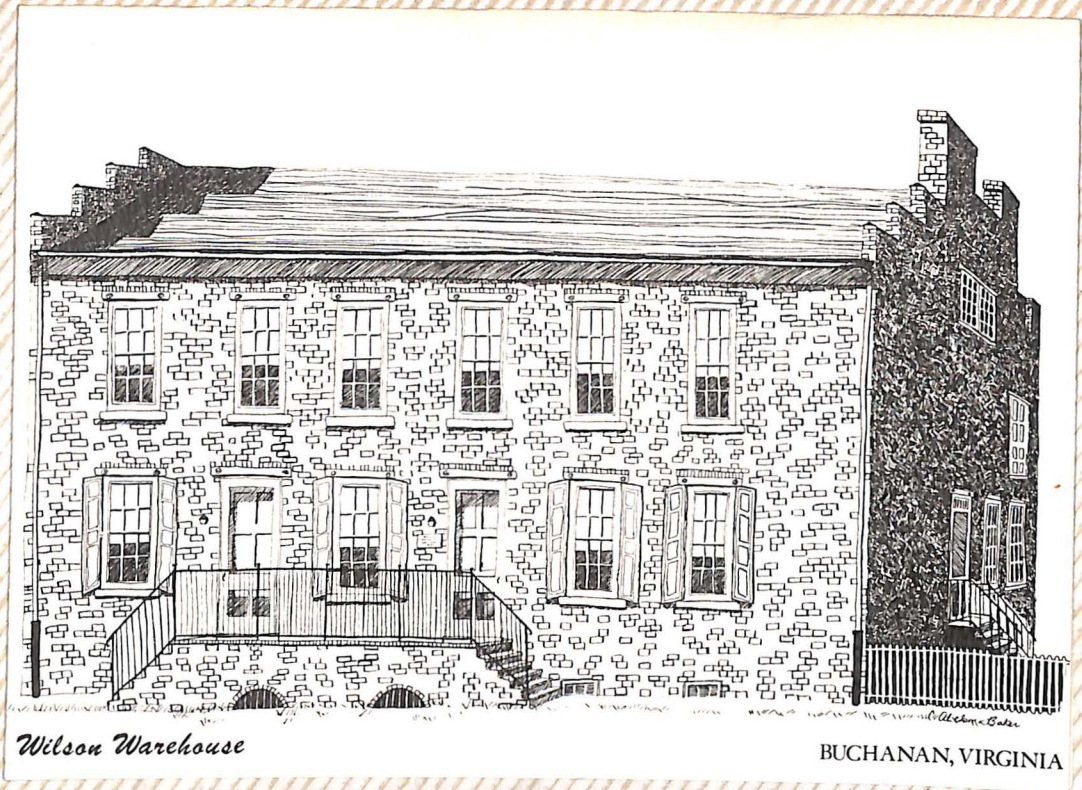
The luncheon was delicious, as it
was beautiful with the table
decorations -

Everything was so lovely and
nice

Thanks for the invitation.

Fondly

Nannie, (Mrs H. Hendricks)



Wilson Warehouse

BUCHANAN, VIRGINIA





Wilson Warehouse

BUCHANAN, VIRGINIA

Dear Mrs. Breunig,

May 7, 1954

Thank you so very much for the opportunity to judge your show, "Maintain Magic In May." It was a lovely show and a day filled with pleasure. Also, my thanks for the delicious luncheon and the most needed and useful note paper.

The opportunity to judge your show has fulfilled my requirements for judging credits and I may now go on to Symposium! Again my thanks,

Sincerely,
Lucy R. Knight

Program by district leader

The Eagle Rock Garden Club is sponsoring a program, "Arrangements Using Madonnas," by Mrs. Charles (Vinton) Ham, president of the Shenandoah District.

All members of the Botetourt County Council of Garden Clubs and their guests have a special invitation to attend. The program will be held at 1:30 p.m. Saturday, November 10, in the Eagle Rock Community Center. A reception will follow the program.

Garden club

Mrs. Charles (Vinton) Ham, president of the Shenandoah District, will present a program on "Arrangements Using Madonnas" at this month's meeting of the Eagle Rock Garden Club.

All members of the Botetourt County Council of Garden Clubs and their guests are invited to attend. The program will be held at 1:30 p.m. Saturday, Nov. 10, in the Eagle Rock Community Center. A reception will follow.

FINCASTLE HERALD—THURSDAY, NOVEMBER 15, 1984—PAGE 3-A

District president at local meeting

Vinton Hamm, president of the Shenandoah District of Garden Clubs and a master judge, gave a program on "Arrangements Using Madonnas" Saturday, Nov. 10, at the Eagle Rock Community Center.

She gave a history of Madonnas, information on how to treat plant materials and how to make backgrounds.

The Eagle Rock Garden Club was host. All members of the county's clubs were invited.



Shenandoah District President Vinton Hamm visited Eagle Rock club.

THE FINCASTLE (VA.) HERALD
MAY 3, 1984

Page 7

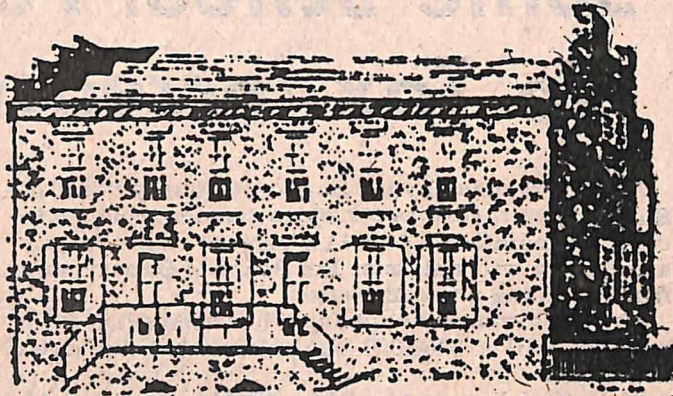


Photo Courtesy

BUCHANAN VIRGINIA

SITE OF SHOW--The Buchanan Community House on Lowe Street will be the setting for the Botetourt County Council of Garden Clubs' Home Flower Show entitled "Mountain Magic in May" this Saturday and Sunday. There will be three classes in each division: artistic, creativity and one invitational class in which four Buchanan residences will compete. The Virginia Game Commission will provide an exhibit on birds for the educational division. All classes will depict the region's heritage: valleys, James River and Purgatory Mountain. Horticulture also will be judged. The show will be open from 1-5 p.m. both days. ■

Garden Club Council

Delegates and alternates from county garden clubs met August 26 in the home of Mrs. Scott H. Critzer for a meeting of the Botetourt County Garden Clubs Council.

Frances Horner, Alice Geiger and Leonor Myers, nominating committee, presented the following slate of officers: Sylvia Albert, president; Beverly Stafford, vice-president; Alice Geiger, secretary; Pearl Drewry, treasurer; Fern Robertson, historian, and Ouida Persinger, reporter.



, JUNE 11, 1986

Council Of Garden Clubs

The Botetourt County Council of Garden Clubs is sponsoring a workshop for council members. Mrs. James L. Sowder, a master judge holding life and master certificates, will conduct the workshop on flower arranging.

The workshop will be held from 10 a.m.-2 p.m. Wednesday, July 30, in the Fincastle Presbyterian Church.

-WEDNESDAY, OCT. 1, 1986

Council of Garden Clubs

The Botetourt County Council of Garden Clubs is sponsoring a workshop for council members. Mrs. James L. Sowder, a master judge who holds life and master certificates, will conduct the workshop on flower arranging.

It will be held in the Fincastle Presbyterian Church on Saturday, Oct. 4 from 10 a.m.-2 p.m. Members are to bring their lunch (tea and coffee will be supplied), flowers, line material, containers and mechanics to make two or three arrangements.

JULY 23, 1986

**News from
Botetourt
County**

Council of Garden Clubs

The flower arranging workshop sponsored by the Botetourt County Council of Garden Clubs has been postponed.

The workshop, to be conducted by Mrs. James L. Sowder, has been rescheduled for Saturday, Oct. 4. Details will be announced later.



BOTETOURT COUNTY COUNCIL
OF
FEDERATED GARDEN CLUBS

PRESENTS

"CHRISTMAS ACCENTS"

A Standard Flower Show

in the

PINCASTLE VOLUNTEER FIRE DEPARTMENT BUILDING



SATURDAY, DECEMBER 3, 1988
1:00 P. M. - 9:00 P. M.

and

SUNDAY, DECEMBER 4, 1988
1:00 P. M. - 5:00 P. M.

FLOWER SHOW COMMITTEES

General Chairman - Mrs. Fern Robertson, Castle Garden Club, 473-2038
Mrs. Shirley Kingery, Big Spring Garden Club 992-4747

Schedule Committee- Fincastle Garden Club
Mrs. Hellen Caldwell, Chr. 473-2066

Advance Registration Fincastle Garden Club
Mrs. Vivian Shelton, 992-3284
Mrs. Mary Schoonover, 992-2394

Design and Horticulture Classification and Placement - Eagle Rock Garden Club

Staging Castle Garden Club

Judges and Judges Hospitality - Rainbow Forest Garden Club

Publicity Fincastle Garden Club
Mrs. Marjorie Roberts 473-2327
Mrs. Frances Hanes 473-3473

Hostesses and Hospitality - Fincastle Garden Club

Judges Luncheon - Big Spring Garden Club

Tabulation - Mrs. Fern Robertson
Mrs. Shirley Kingery

Awards - Fincastle Garden Club
Mrs. Ruby Morgan 473-2126
Mrs. Josephine Haymaker 473-2901

Educational and Commercial Exhibits-Bonsack Garden Club

PERPETUAL AWARDS

1. Federation Cup - Club with most points
2. Ikenberry & Garst Award - Club with the most blue ribbons
3. Bess Stoner Award - Tri-Color Award
4. Laurel Mountain Farm Award - Award of Distinction
5. Mary Ruth Eakin Memorial Award - Creativity Award
6. Myrtle Bonsack Stanley Award - The Award of Horticultural Excellence
7. Hellen Caldwell Award - The Award of Merit
8. Webster Brick Award - Arboreal Award
9. Orchard View Award - Club with the most blue ribbons in Design
10. Fincastle Insurance Agency Award - Club with the most blue ribbons in Horticulture
11. Lone Star Cement Award - To the person with the most blue ribbons in Design and Horticulture combined
12. MacNamara Award - To the person with the most points in Design and Horticulture combined
13. Bank of Fincastle Award - To the person with the most blue ribbons in Design
14. First National Bank of Troutville Award - To the person with the most blue ribbons in Horticulture
15. Individual Clubs may give own awards

GENERAL RULES

1. Only members of the Botetourt County Council of Garden Clubs are eligible to enter exhibits in this show, except in Division II, Section B, Educational or Commercial Exhibits.
2. Advance registration of both Design and Horticulture Classes must be made by Tuesday, November 29, and each individual is responsible for seeing that all Design reservations made by her are filled.
3. Each Exhibitor must hand into the Entries Committee a list of both Design and Horticulture entries at time of entry.
4. Entries will be received from 8:00 A. M. to 10:30 A. M., Saturday, December 3, and may not be removed before 5:00 P. M., Sunday, December 4, but must be removed by 6:00 P. M.
5. An exhibitor may enter only one exhibit in a class or sub-class. Classification Committee may sub-divide classes as necessary.
6. State Conservation plant material may be used only if grown by the exhibitor. A card must state "Grown By The Exhibitor."
7. The Show Committee will exercise all care possible but cannot be responsible for damage or loss of exhibitor's property. The exhibitor's name should be on all property.
8. This show will comply with the standards of the National Council of State Garden Clubs, Inc.
9. Judging will begin at 11:00 A. M., Saturday, December 3, 1988, and the decision of judges will be final. Only authorized personnel may be present during judging.
10. The Schedule is the Law of the Show.
11. Awards to be presented December 4, - 4:00 P. M.

DIVISION I - DESIGN RULES

1. Entries must be completed before arriving on the Show floor, except for minor adjustments at time of placing.
2. Accessories may be used in all design classes, but must be subordinate in the design.
3. A slight amount of embellishment of fresh plant material is allowed in Division I, Sections A and C, and Division II, Section A.
4. No artificial plant material, including fruits and nuts, is permitted in this show.
5. Dried and/or treated plant material and contrived flowers may be used in Division I, Sections, B, C, and D, and Division II, Section A. Decorative wood is dried plant material.
6. The exhibitors must keep their exhibits in good condition for the duration of the show.
7. Division I, Sections A, B, and C classes must each contain 4 (four) exhibits to be eligible for top awards.

CHRISTMAS ACCENTS

DECEMBER 3 - 4, 1988

DIVISION I - DESIGN CLASSES

SECTION A - TRI-COLOR AWARD

Classes 1-3 are eligible for the Bess Stoner Tri-Color Award. An exhibit must score 95 or more to be eligible, and must consist of all fresh plant material.

Staging - Green Niches, 28" wide, 34" high, with 14" wings.

- Class 1. The Simplicity of the Colonial Christmas
- Class 2. The Elegance of a Williamsburg Christmas
- Class 3. A Christmas Carol, "From Heaven on High"

SECTION B - AWARD OF DISTINCTION CLASSES

Classes 4-6 are eligible for the Laurel Mountain Farm Award of Distinction. An exhibit must score 95 or more to be eligible, and must consist of all dried plant material. A minimum amount of treated, dried and/or glycerinized and bleached plant material is permitted. Staging - Brown niches 28" high, 22" wide, 10" wings.

Class 4. The Wish for Peace on Earth - A design featuring a Madonna.

Class 5. The Fun of a Christmas Dance

Class 6. A Fairyland of Snow

SECTION C - CREATIVITY AWARD CLASSES

Classes 7-9 are eligible for the Mary Ruth Eakin Memorial Creativity Award. An exhibit must score 95 or more to be eligible. The exhibitor has complete freedom to choose all components. The designer may use fresh, dried, and/or treated plant material. Abstraction of plant material permitted.

Class 7. Christmas Reflections - Free-standing design staged on table, in 30" space.

Class 8. Evergreens, Red Berries and Candlelight - Staged in green niches, 28" wide, 34" high, 14" wings.

Class 9. The First Christmas - An abstract design staged on a pedestal, 36" high by 12" square.

SECTION D - TABLES

Ribbons won will count toward large awards.

Class 10. Time Out for Tea With Friends - An informal functional Christmas Tea Table for four or more arranged on a card table furnished by the exhibitor. Entries unlimited.

DIVISION II - SPECIAL EXHIBITS

SECTION A - ARTISTIC CRAFTS

Ribbons won will count toward large awards.

Class 1. We Bid You Welcome - Wreaths in table-top spaces 30" by 30". Fresh and/or dried and/or treated plant material. Slight embellishment of fresh plant material permitted. Card (How-To instructions) to accompany exhibit. Entries unlimited.

Class 12. Beautiful Christmas Gift Wrappings - Decorated Christmas packages. Must include plant material, fresh and/or dried. Accessories and slight embellishment of fresh plant material permitted. Staging - 30" by 30" space on table. "How-To" card must accompany exhibit.

SECTION B - EDUCATIONAL AND COMMERCIAL EXHIBITS

Awards of Appreciation to Exhibitors

DIVISION III - HORTICULTURE RULES

1. Exhibits should be named, if possible, and preference will be given to named exhibits.

2. All Horticulture must be displayed in clear glass containers of appropriate size for the specimen (bottles, jars).

3. All Horticulture in the Horticulture Division must have been grown by the exhibitor. House plants must have been in the possession of the exhibitor for at least three months.

4. A specimen is one plant, bloom, spike or spray.

5. The classification Committee will add sub-classes as necessary, and judges must be made aware of the additions when judging the class.

6. Horticulture entries are limited to 10 per person.

7. Awards - Section A, B, and C - Classes 1-27 are eligible for Webster Brick Arboreal Award. Section D, E, and F - Classes 28-44 are eligible for the Hellen Caldwell Award of Merit. Classes 1-44 are eligible for the Myrtle Bonsack Stanley Award of Horticulture Excellence. An exhibit must score 95 or more to be eligible for any of the above.

DIVISION III - HORTICULTURE

SECTION A - BROADLEAF EVERGREEN - NON-FRUITED - Specimen must be 10" and not more than 21" tall from top of container.

Class 1. Acuba
 a. Japonica (green)
 b. Variegata (gold dust)

Class 2. Elaegnus
 a. angustifolia (green and silver)
 b. Pungens variegata (leaves margined yellow and white)

Class 3. Euonymus
 a. variegata
 b. green

Class 4. Ilex (Holly)
 a. variegata

Class 5. Ilex (Holly)
 a. aquifolium (English)

Class 6. Mahonia
 a. aquifolium (Oregon Holly grape)
 b. Bealei (leather leaf)

Class 7. Osmanthus
 a. ilicifolius
 b. fortunei (hybrid)

Class 8. Pieris (Andromeda)
 a. Japonica (Japanese Andromeda)
 b. floribunda

Class 9. Photinia
 a. glabra
 b. serrulata

Class 10. Any other non-fruited broadleaf evergreen

SECTION B - BROADLEAF EVERGREEN - FRUITED - Specimen must be 10" and not more than 21" from top of container.

Class 11. Cotoneaster
 a. microphylla
 b. rotundifolia

Class 12. Berberis (Barberry)
 a. Julianae
 b. any other

Class 13. Ilex Cornuta (Chinese Holly)
 a. cornuta
 b. cornuti burfordii

Class 14. Ilex Crenata (Japanese Holly)
 a. crenata
 b. crenata convexa
 c. crenata rotundifolia

Class 15. Ilex Aquifolium (English Holly)

Class 16. Ilex Opaca (American Holly)

Class 17. Ilex Holly - any other fruited not listed above.

Class 18. Pyracantha (Firethorn)
 a. orange berries
 b. red berries

Class 19. Any other fruited broadleaf evergreen

SECTION C - NEEDLED EVERGREENS, CONIFERS - (Spray must be 10" and not over 21" tall from top of container.)

Class 20. Abies (Fir)
 a. Concolor (uniform color)
 b. Any other

Class 21. Cunninghamia lanceolata (China Fir)

Class 22. Cedrus (Cedar)
 a. deodora
 b. atlantica
 c. any other

Class 23. Juniperus (Juniper)
 a. Any species or variety

Class 24. Picea (Spruce)
 a. Engelmanni (White)
 b. excelsa (Norway)
 c. Montana Mugo (dwarf mountain)
 8"-10"

Class 25. Pinus (Pine)
 a. densiflora (Japanese Red)
 b. strobus (white)
 c. Montana Mugo (dwarf mountain)
 8"-10"

Class 26. Taxus (Yew)
 a. cuspidata (Japanese)
 b. Any other

Class 27. Any other needled evergreen or conifer

SECTION D - HOUSEPLANTS GROWN FOR FOLIAGE

- Class 28. a. Peperomia sandersi (watermelon begonia)
 b. Peperomia obtusifolia
 c. Peperomia - any other
- Class 29. Begonia
- Class 30. Codiaeum (croton)
- Class 31. Fern (houseplant)
 a. Birds-nest
 b. Boston
 c. Hare's foot
 d. Staghorn
 e. Holly
 f. Squirrel's foot
 g. Any other
- Class 32. Any other house plant grown for foliage

SECTION E. HOUSE PLANTS - single plant in bloom

- Class 33. Christmas Cactus
- Class 34. Begonia
- Class 35. Saintpaulia (African Violet) single crown
 a. single flowered
 b. double flowered
 c. ruffled flowered

CLASS 36. Any other house plant in bloom

SECTION F - SUCCULENTS

- Class 37. Cacti
- Class 38. Stone crop
- Class 39. Sedum
- Class 40. Crassulaceae (jade plant, etc.)
- Class 41. Kalanchoe

- Class 42. Agave (century plant)
- Class 43. Euphorbia
 a. poinsettia
 b. crown of thorns
- Class 44. Any other succulent not listed

DEFINITIONS

DECORATIVE WOOD - Weathered wood (has had surface color, texture and/or form altered by the elements), may be dried branches, sections of tree limbs or trunks, roots, cypress knees. The surface of these may be waxed, varnished or otherwise treated with materials which have been added.

CONTRIVED FLOWER - One made from fresh, dried and/or treated, but recognizable, plant material.

CREATIVE DESIGN - Designs that result from the creative idea of the artist, using plant material and other components to organize the design. This type includes abstract.

ABSTRACT DESIGN - A creative design in which plant material and other components are used solely as line, form, color and texture in space, to create new images. (Cutting plant material for use and placing it in it's natural growing position does not constitute abstraction), however, if a component can be identified as a flower, leaf, branch, etc., the identification has little or no importance in the finished design.

TREATED PLANT MATERIAL - Dried plant material whose appearance has been altered, but is still recognizable as plant material. This includes glycerinizing, painting, or altering by any method except those which abstract the material.

ABSTRACTION - Plant material - taking away, removing bits and pieces, or parts, distorting, changing the surface, placing in unusual positions, etc., clipping, bending, folding, stripping, tying, etc.

REGISTRATION FORM

(For both Design and Horticulture Classes)

Send to or call either Mrs. Vivian Shelton, Rt. 2,
Box 616, Troutville, Va.-24175 - Tele. 992-3284, or
Mrs. Mary Schoonover, Rt. 2, Box 599, Troutville,
Va. 24175 - Tele. 992-2394, by November 29.

DESIGN CLASSES

CLASS #	NAME OF CLASS
_____	_____
_____	_____
_____	_____
_____	_____
_____	_____

HORTICULTURE CLASSES

CLASS #	CLASS #	CLASS #
_____	_____	_____
_____	_____	_____
_____	_____	_____
_____	_____	_____
_____	_____	_____

National Council of State

Bolton Co Council

Date Dec 3 4, 19

I DIVISION
CLASS No. 10 ENTRY No.

Time out for Tea With Friends
VARIETY OR CLASS NAME

Judged by

EXHIBITOR Doris Hall

ADDRESS

CLUB Bonsack
1st 2nd 3rd Honorable
Mention

Exhibitor Doris Hall

Address Bonsack

Club

Division

Class No. 10 Entry No.



